

Førmateriale

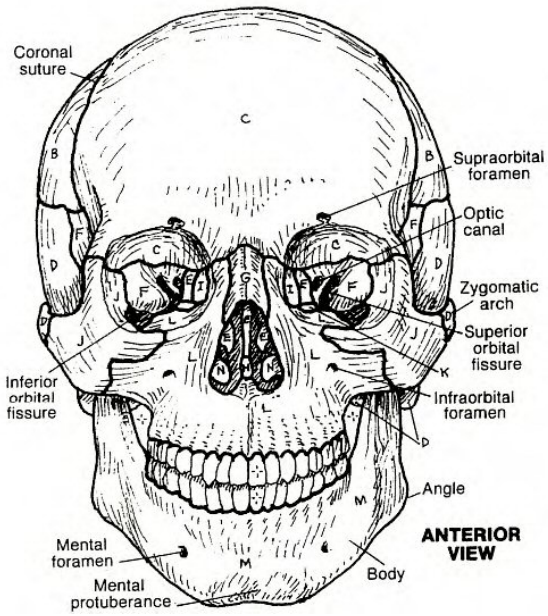
Kranio Sakral Terapi II

KST II

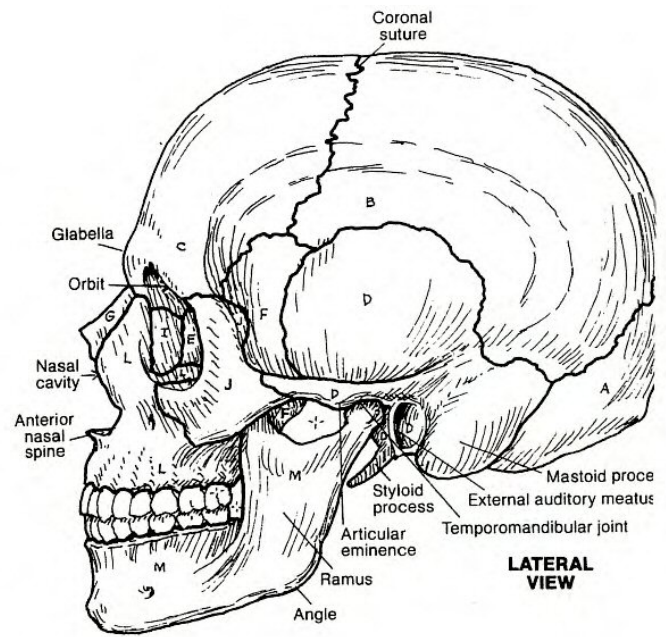
Farv knoglerne på tegningerne:

Os occipitale	a	lys blå
Os ethmoidale	e	gul
Os sphenoidale	f	rød
Os nasale	g	(hvid)
Vomer	h	orange
Os zygomaticum	j	lys orange
Os palatine	k	lys brun
Os maxilla	l	mørk lilla
Os mandibula	m	(hvid)
Os frontale	c	gul
Os temporale	d	brun
Os parietale	b	grå

**Kraniet set forfra
(anteriort)**

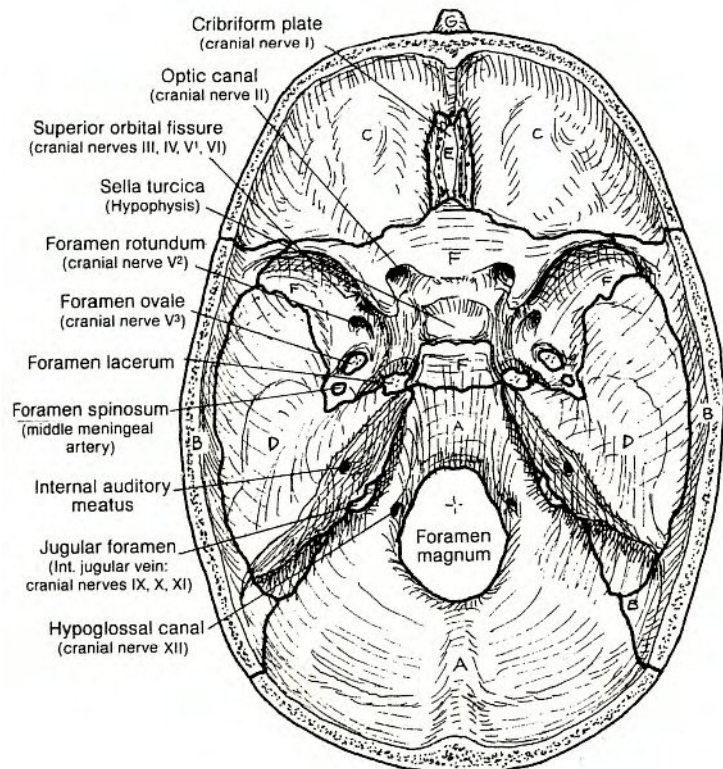


**Kraniet set fra siden
(lateralt)**

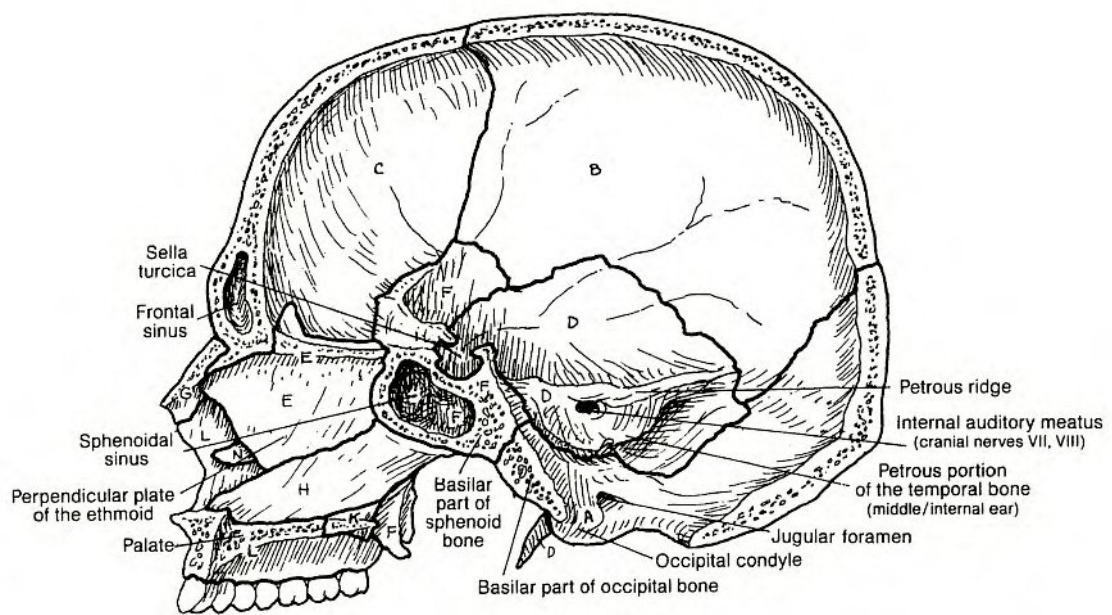


Basis cranii interna

(set oppefra – inferiort/caudalt)

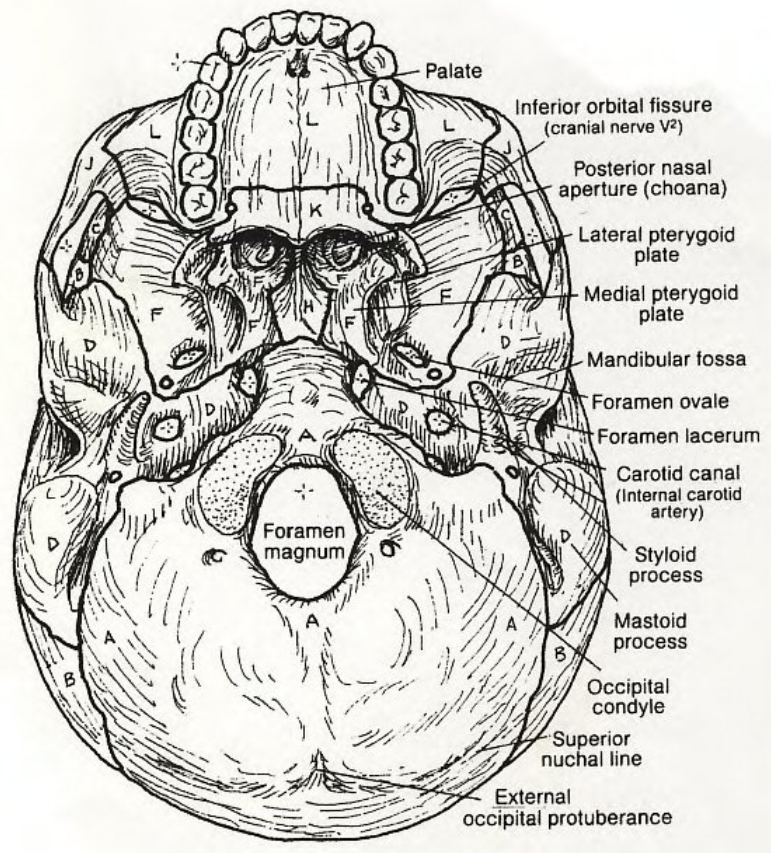


Sagittalt snit gennem kraniet



Basis cranii

(set nedefra – superiort/cranialt)

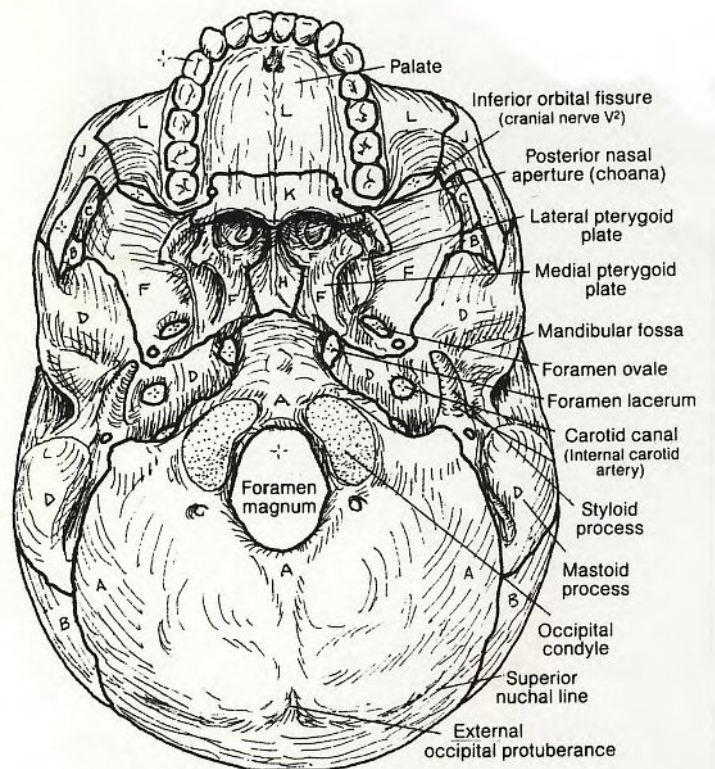
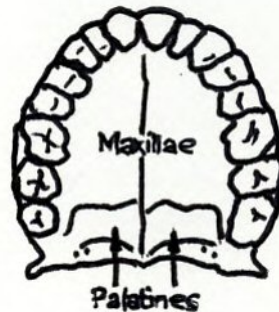


Kraniet set nedefra:

Ganen (1)

Farv:

- Maxilla – mørk lilla
- Palatinum – lys brun
- Sphenoid – rød
- Vomer - orange

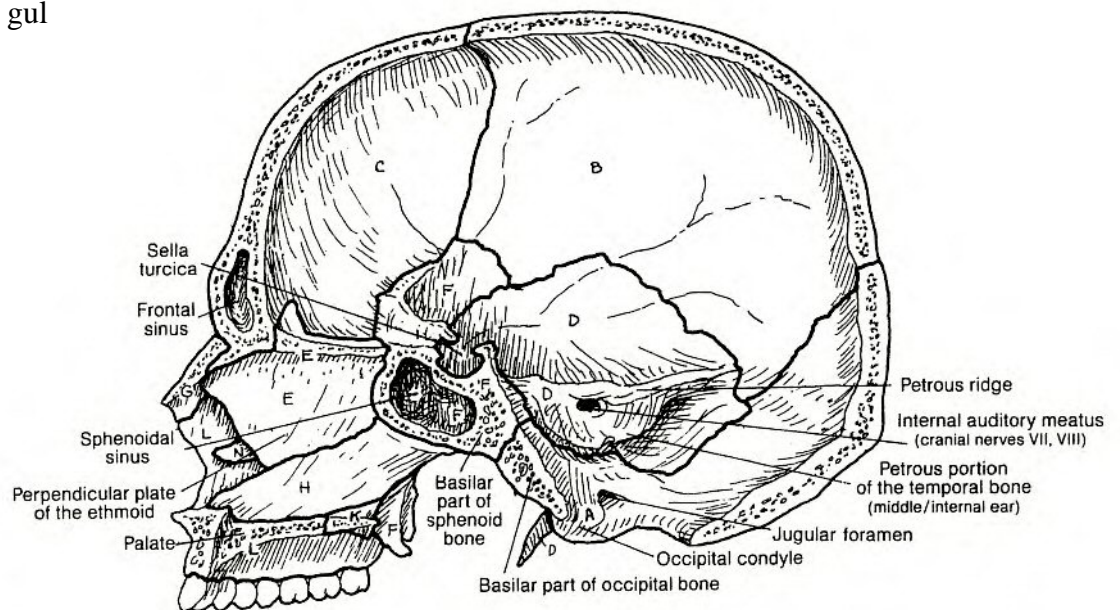


Fra midten: Med vomer og ethmoidale på plads:

Ganen (2)

Farv:

Maxilla – L mørk lilla
 Palatinum – K– lys brun
 Sphenoidale – F - rød
 Vomer – H – orange
 Ethmoidale – E – gul



Uden vomer og ethmoid:



Ganen (3)

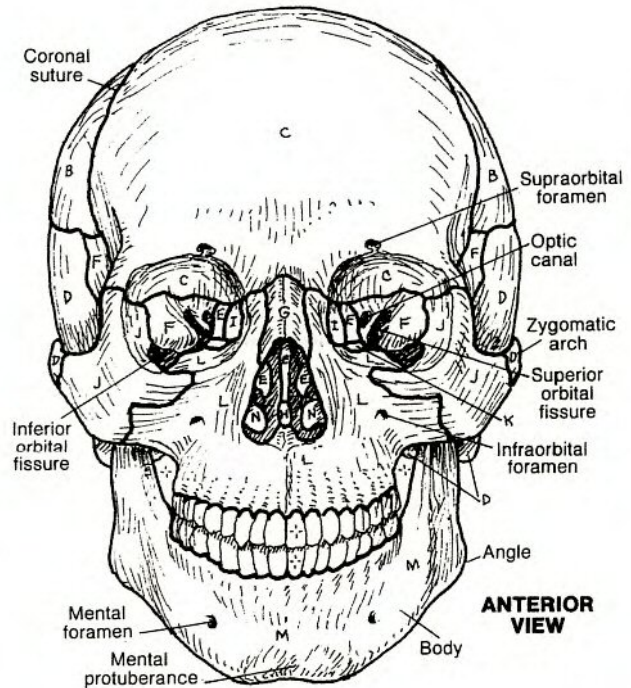
Forfra:

Farv:

Maxilla – mørk lilla

Sphenoidale – rød

Ethmoidale – gul



Fra siden:

